

APPENDIX 1 – Map of expected fibre broadband coverage in Leicestershire through LCC/BT contract

Expected deployment of fibre broadband by 2018 in Leicester and Leicestershire



Purpose and notices

This map shows an overview of the expected rollout of fibre broadband to around 95% of residential and business premises in Leicestershire by the end of March 2016.

This rollout includes deployment by private companies (e.g. BT and Virgin Media) by 2016 (shaded grey) and as a result of investment made by the County Council, Government, EU and BT through the County Council led project. This will be delivered by the end of March 2016 (shaded dark green and light green).

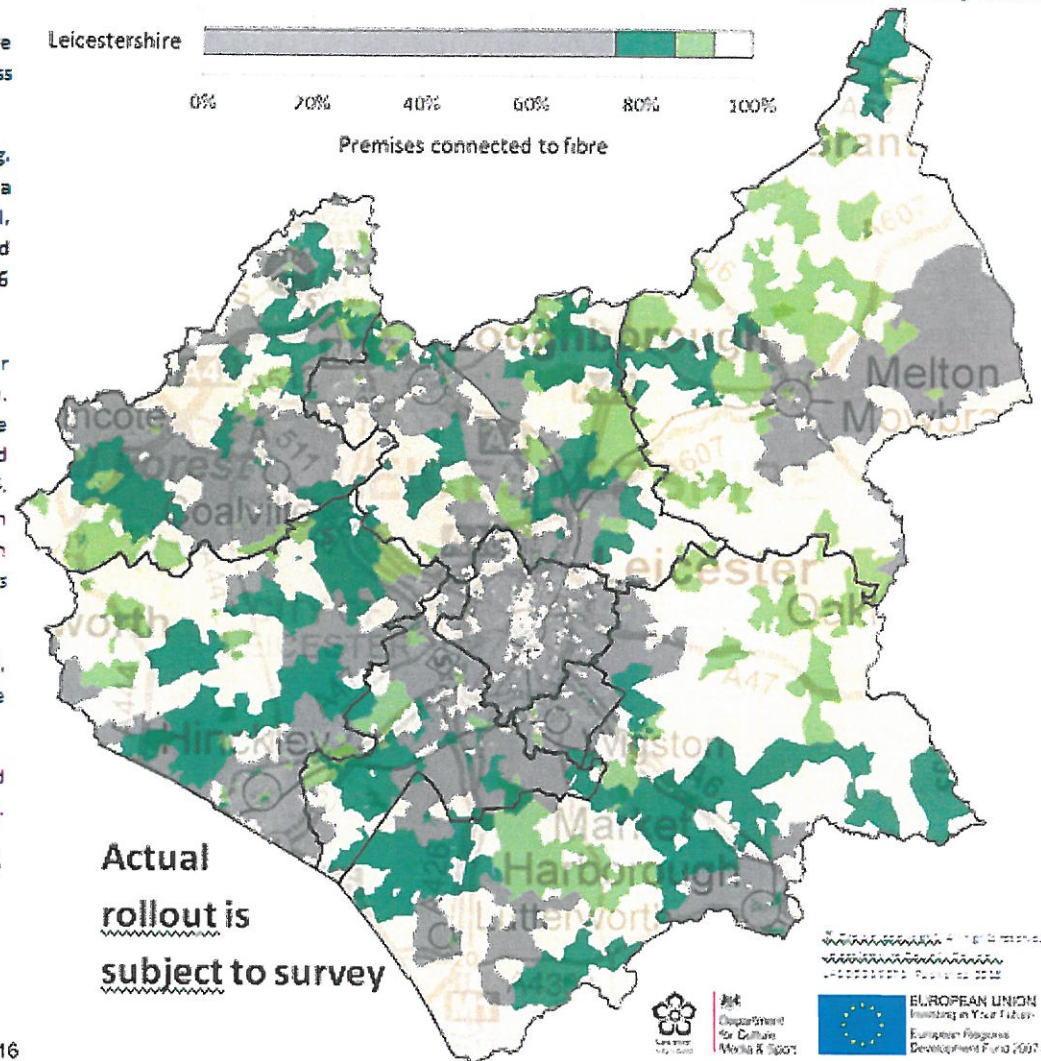
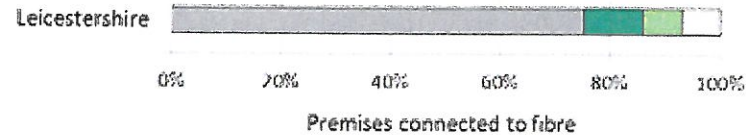
This map is high-level only. It is not accurate to premise or postcode level and should not be interpreted as such. Detailed planning is currently underway. The first Exchange areas will be announced in the New Year and an updated version of this map is expected to be published in spring 2014. This will be followed by more detailed information as each rollout phase is confirmed. Communities will be notified in advance of fibre-broadband being available in their area. This map will be reviewed on a regular basis.

Further investment is planned by the County Council, Government and District Councils for areas due to be addressed by 2018 (shaded light yellow).

Maps, announcements and responses to frequently asked questions will be available at www.leics.gov.uk/broadband.

Existing and expected commercial coverage up to 2016

- Private Operators
- Broadband Leicestershire Contract
 - Expected deployment from summer 2014
 - Expected deployment from summer 2015
- Further Investment - Target Completion by 2016
 - With all areas receiving a minimum 2Mbps by summer 2016



Actual rollout is subject to survey



Available at <http://www.leics.gov.uk/outlinebroadbandmap.pdf>