

# Melton Area Safer Communities Partnership

PERFORMANCE DATA End of Year 2009 -10

ACQUISITIVE CRIME

VIOLENT CRIME

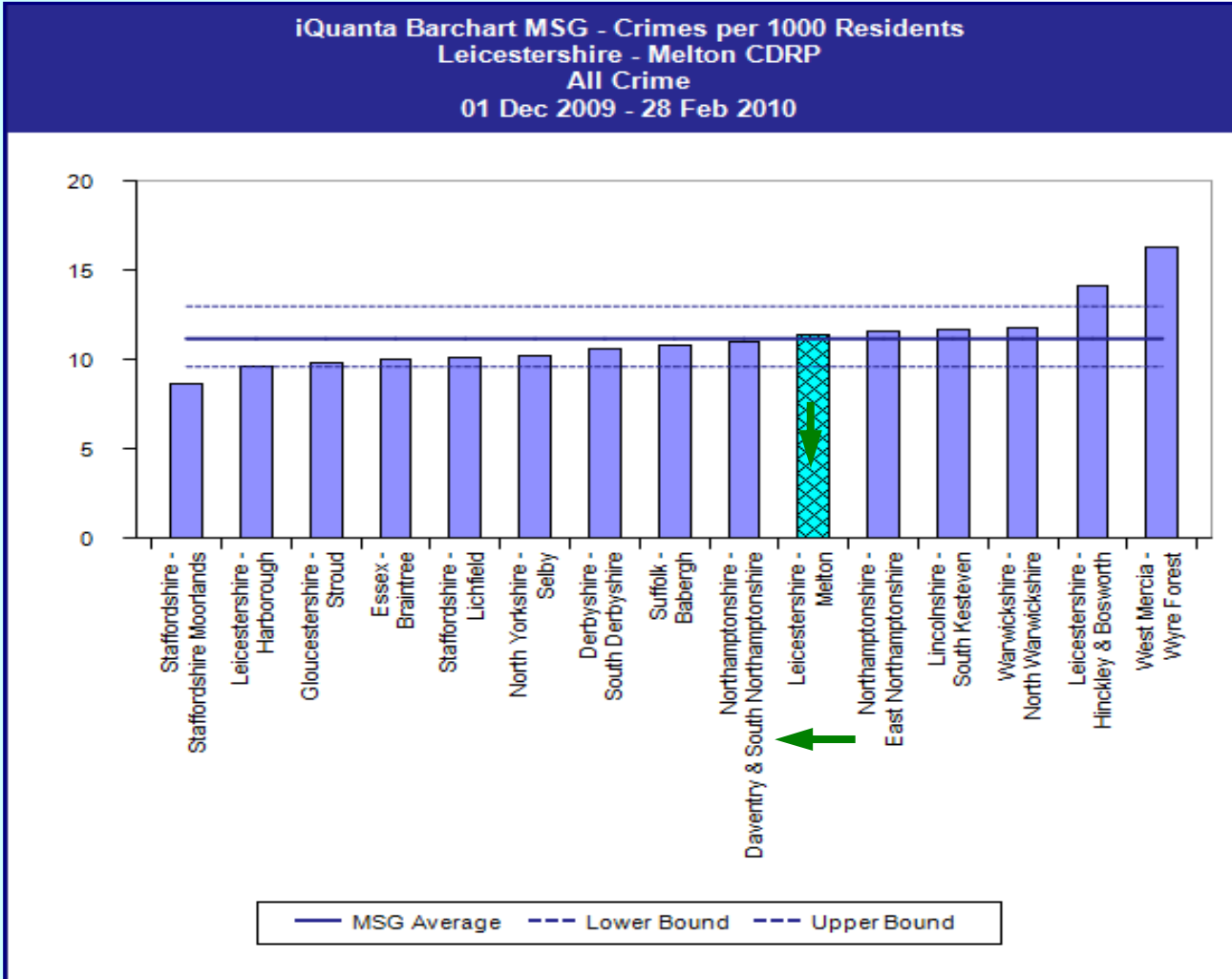
ANTI-SOCIAL BEHAVIOUR

CONFIDENCE

# ACQUISITIVE CRIME

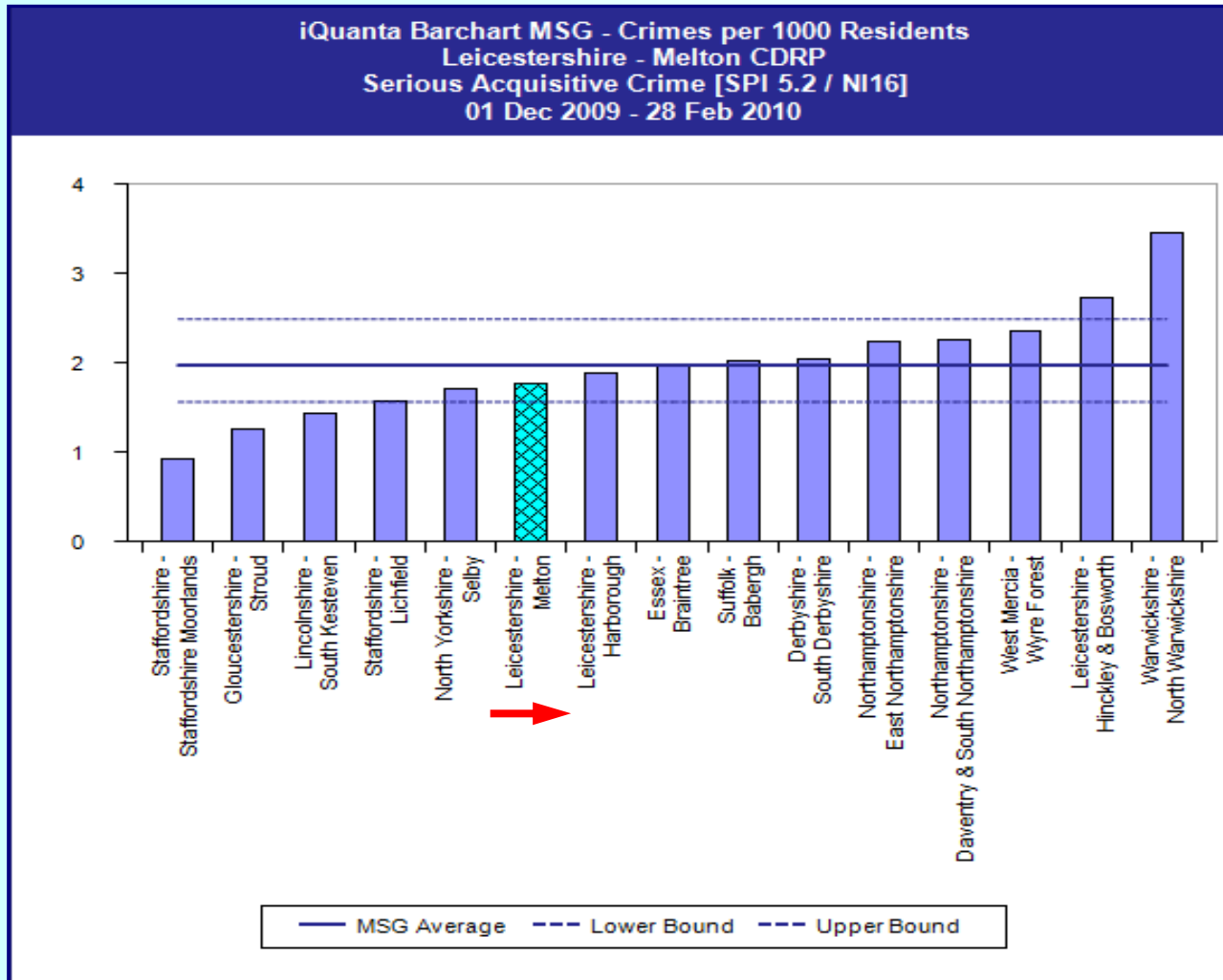
COMPARATIVE  
PERFORMANCE

ALL CRIME



Source: iQuanta, Tackling Crime, Crimes, December 2009 to February 2010

## SERIOUS ACQUISITIVE CRIME



## **SERIOUS ACQUISITIVE CRIME:**

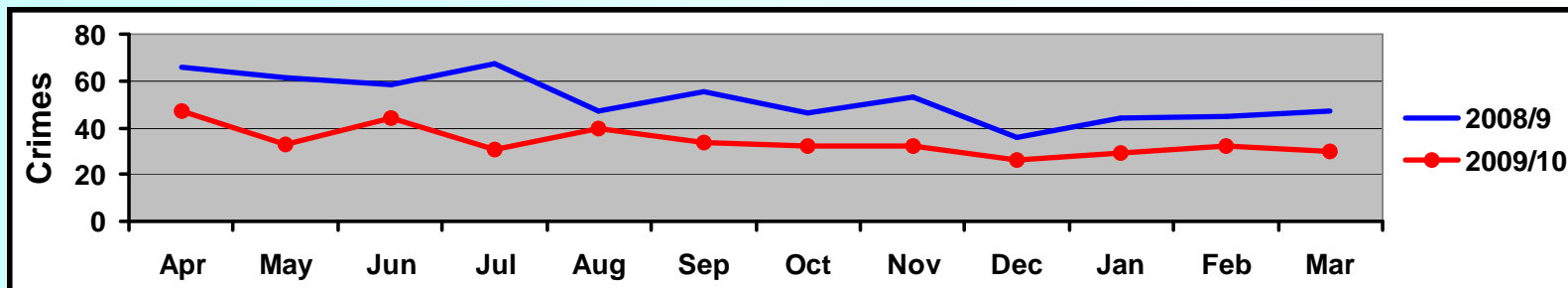
- **DOMESTIC BURGLARY**
- **THEFT FROM MOTOR VEHICLE**
- **THEFT OF MOTOR VEHICLE**
- **ROBBERY**

SERIOUS ACQUISITIVE CRIME

Target reduction = -3%

Melton year to date % change = **-34.4%** (-34.6%)

Crimes YTD		% Change	Difference from Target
2008/9	2009/10		
625	410	<b>-34.4</b>	<b>-196</b>

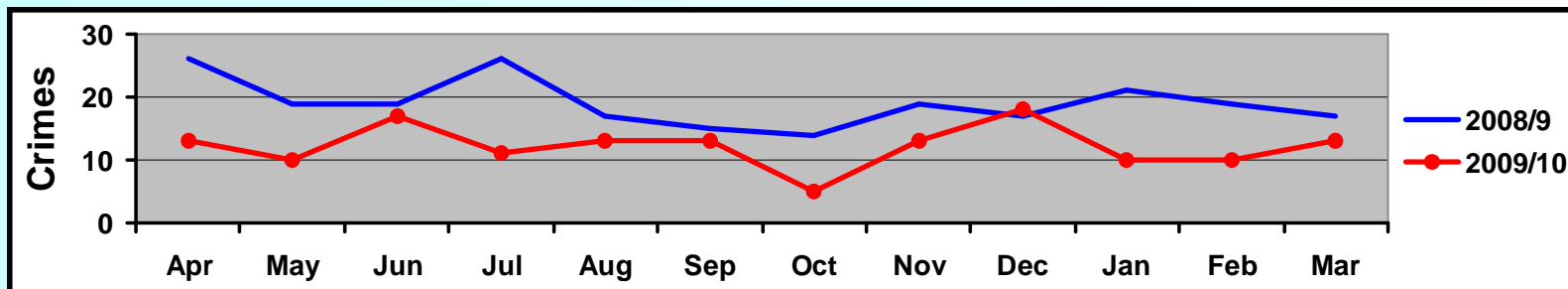


DOMESTIC BURGLARY

Target reduction = -3%

Melton year to date % change = **-36.2%** (-37.3%)

Crimes YTD		% Change	Difference from Target
2008/9	2009/10		
229	146	<b>-36.2</b>	<b>-76</b>



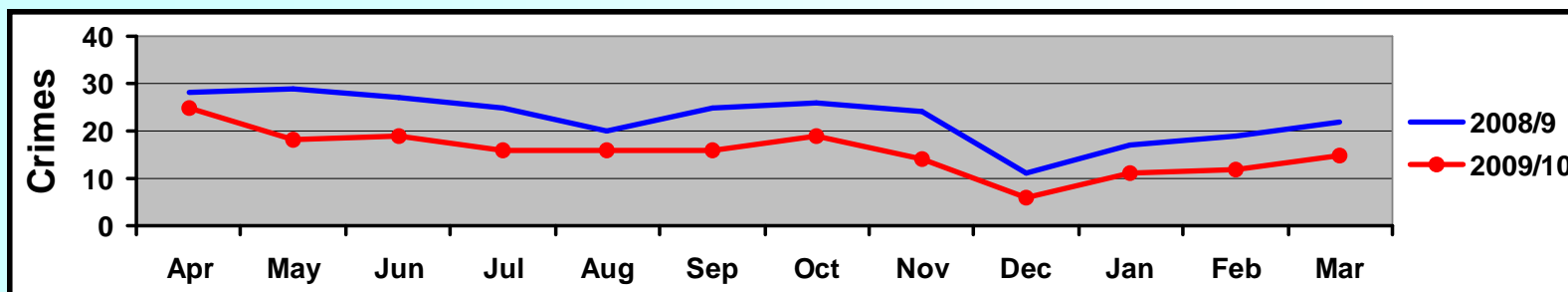


THEFT FROM MOTOR  
VEHICLE

Target reduction = -3%

Melton year to date % change = **-31.5%** (-32.7%)

Crimes YTD		% Change	Difference from Target
2008/9	2009/10		
273	187	<b>-31.5</b>	-78

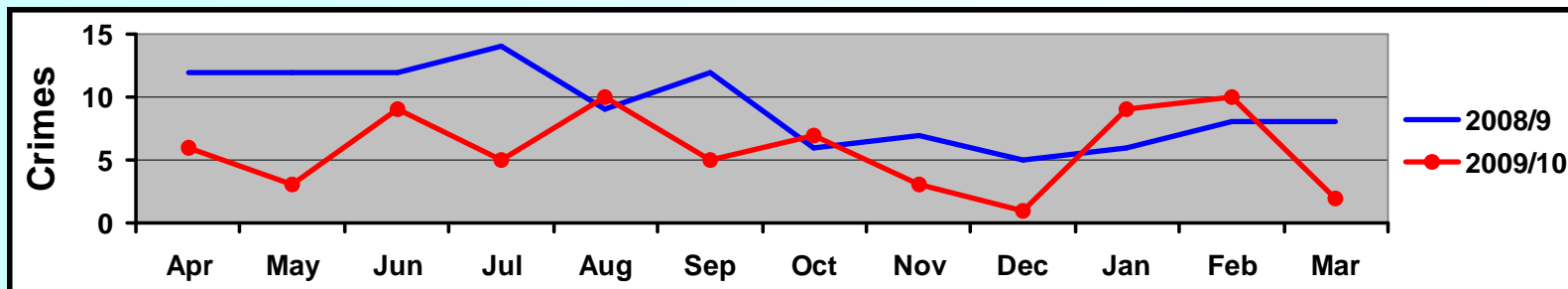


THEFT OF MOTOR VEHICLE

Target reduction = -3%

Melton year to date % change = **-36.9%** (-32.7%)

Crimes YTD		% Change	Difference from Target
2008/9	2009/10		
111	70	<b>-36.9</b>	<b>-38</b>

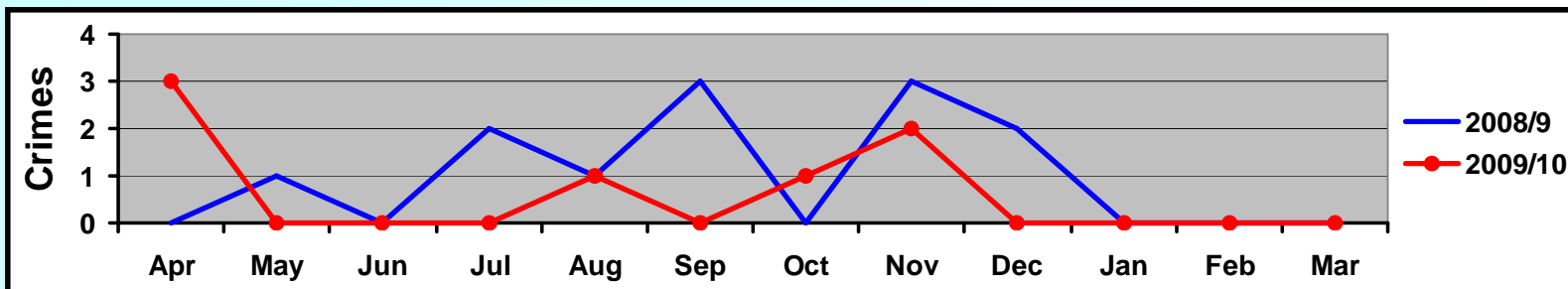


ROBBERY

Target reduction = -3%

Melton year to date % change = **-41.7%** (-41.7%)

Crimes YTD		% Change	Difference from Target
2008/9	2009/10		
12	7	-41.7	-5

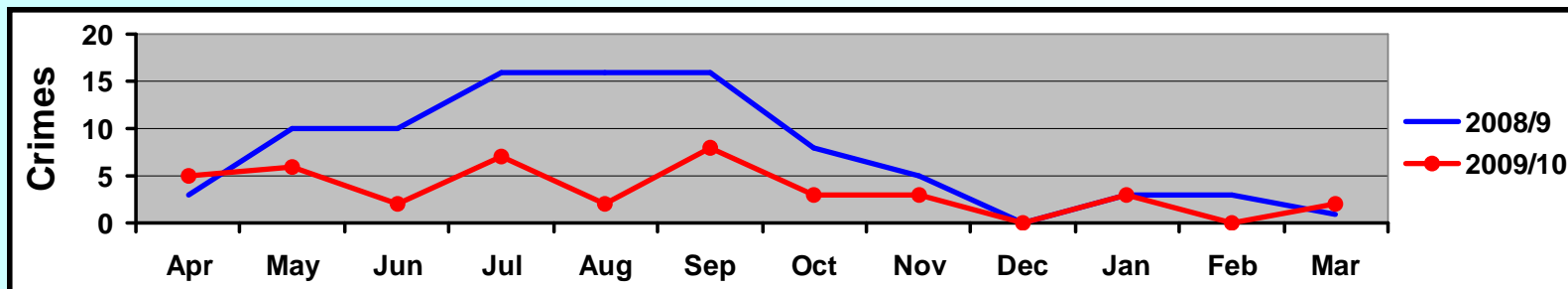


CYCLE THEFT

Target reduction = -3%

Melton year to date % change = **-54.9%** (-57.1%)

Crimes YTD		% Change	Difference from Target
2008/9	2009/10		
91	41	<b>-54.9</b>	-47



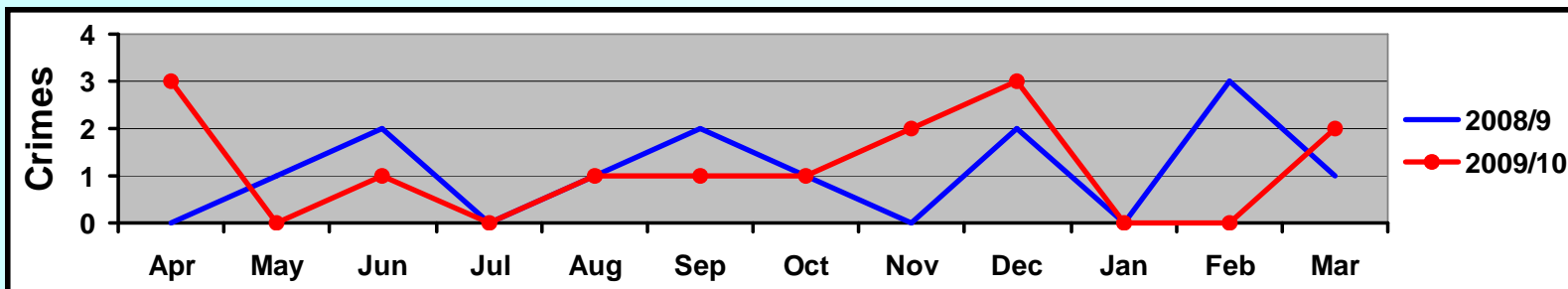
# VIOLENT CRIME

SERIOUS VIOLENT CRIME

Target reduction = -5%

Melton year to date % change = **7.7%** (0%)

Crimes YTD		% Change	Difference from Target
2008/9	2009/10		
13	14	<b>7.7</b>	2

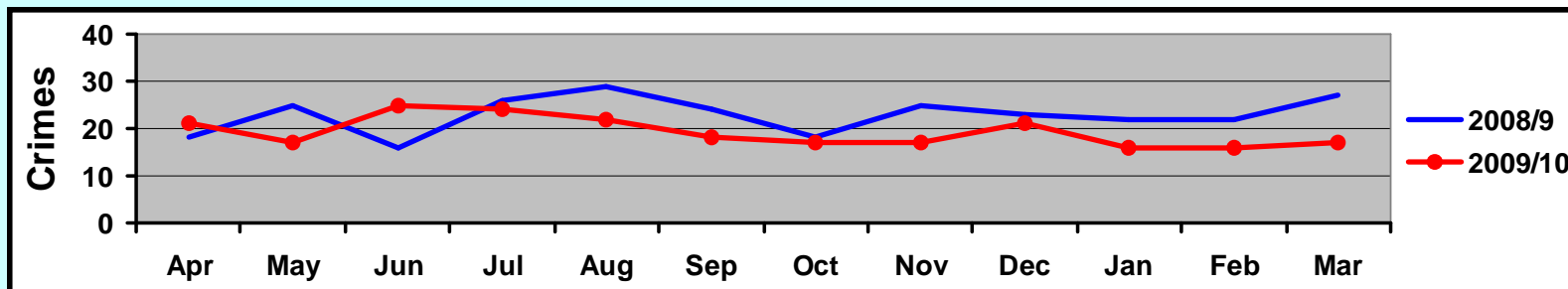


ASSAULT WITH LESS  
SERIOUS INJURY

Target reduction = -3%

Melton year to date % change = **-16%** (-14.9%)

Crimes YTD		% Change	Difference from Target
2008/9	2009/10		
275	231	<b>-16.0</b>	<b>-36</b>



## HATE INCIDENTS:

- RACIAL (89%)
- RELIGIOUS (0%)
- HOMOPHOBIC (11%)
- AGE (0%)
- DISABILITY (0%)
- GENDER (0%)

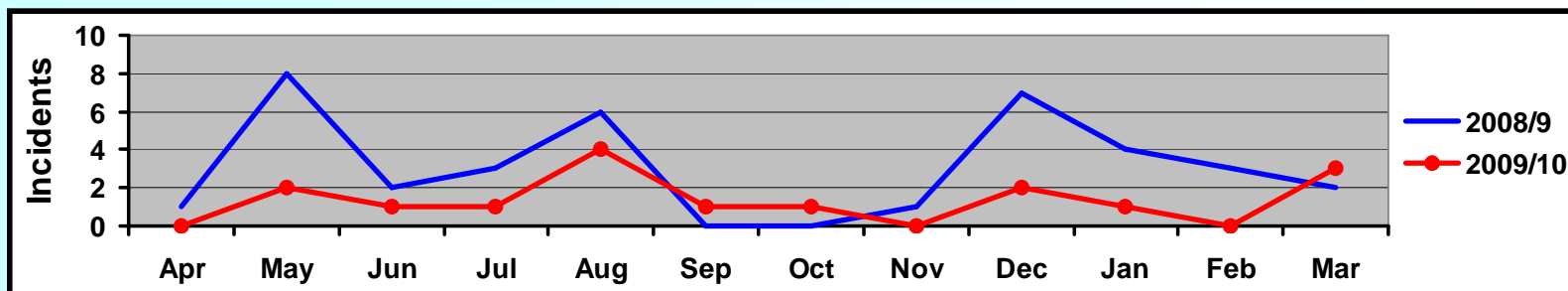
**(Based on data for Apr – Oct 2009)**



HATE INCIDENTS

Melton year to date % change = **-56.8%** (-62.9%)

Incidents YTD		% Change
2008/9	2009/10	
37	16	-56.8

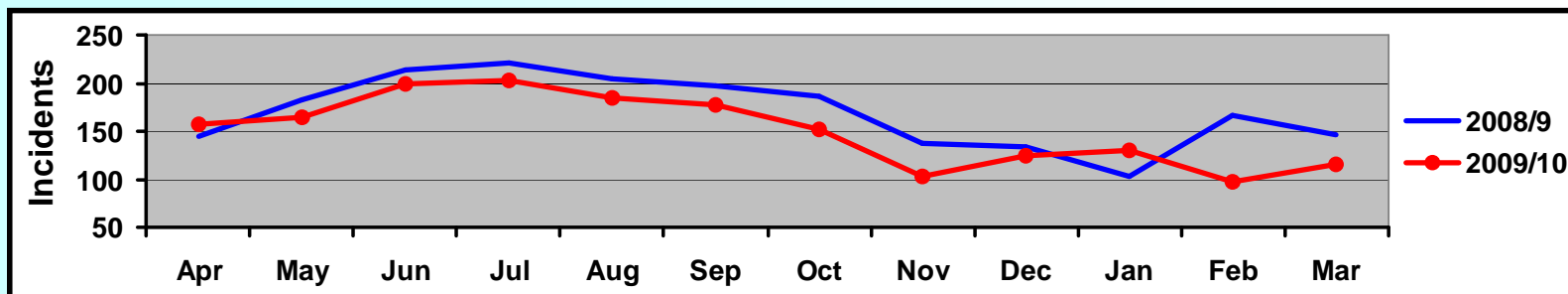


# ANTI-SOCIAL BEHAVIOUR

ANTI-SOCIAL BEHAVIOUR  
INCIDENTS

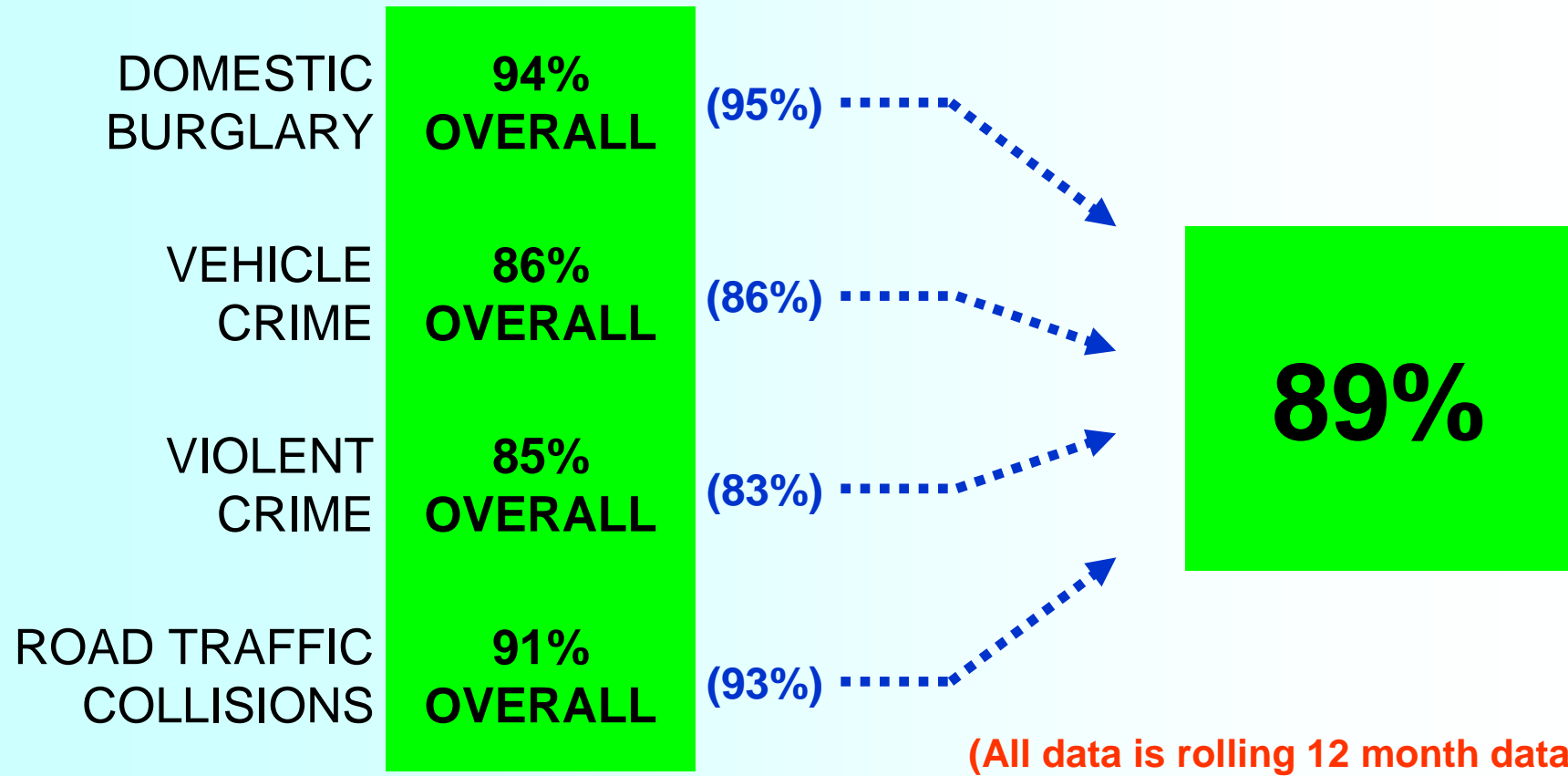
Melton year to date % change = **-11.4%** (-10.6%)

Incidents YTD		% Change
2008/9	2009/10	
2039	1807	-11.4



# CONFIDENCE

# POLICE AREA CUSTOMER SATISFACTION:



## MELTON OVERALL SATISFACTION:

<b>OVERALL</b>	<b>91%</b>	(94%)
1 <sup>st</sup> CONTACT	<b>92%</b>	(91%)
ACTION	<b>87%</b>	(86%)
FOLLOW UP	<b>82%</b>	(85%)
TREATMENT	<b>96%</b>	(97%)

(All data is rolling 12 month data)

## MELTON RACIST INCIDENTS SATISFACTION:

<b>OVERALL</b>	<b>100%</b>	(100%)
1 <sup>st</sup> CONTACT	<b>100%</b>	(100%)
ACTION	<b>50%</b>	(67%)
FOLLOW UP	<b>100%</b>	(100%)
TREATMENT	<b>100%</b>	(100%)

(All data is rolling 12 month data)

## MELTON ASB INCIDENTS SATISFACTION:

<b>OVERALL</b>	<b>77%</b>	(75%)
1 <sup>st</sup> CONTACT	<b>91%</b>	(91%)
ACTION	<b>74%</b>	(72%)
FOLLOW UP	<b>53%</b>	(50%)
TREATMENT	<b>88%</b>	(88%)

(All data is rolling 12 month data)



**THE END**