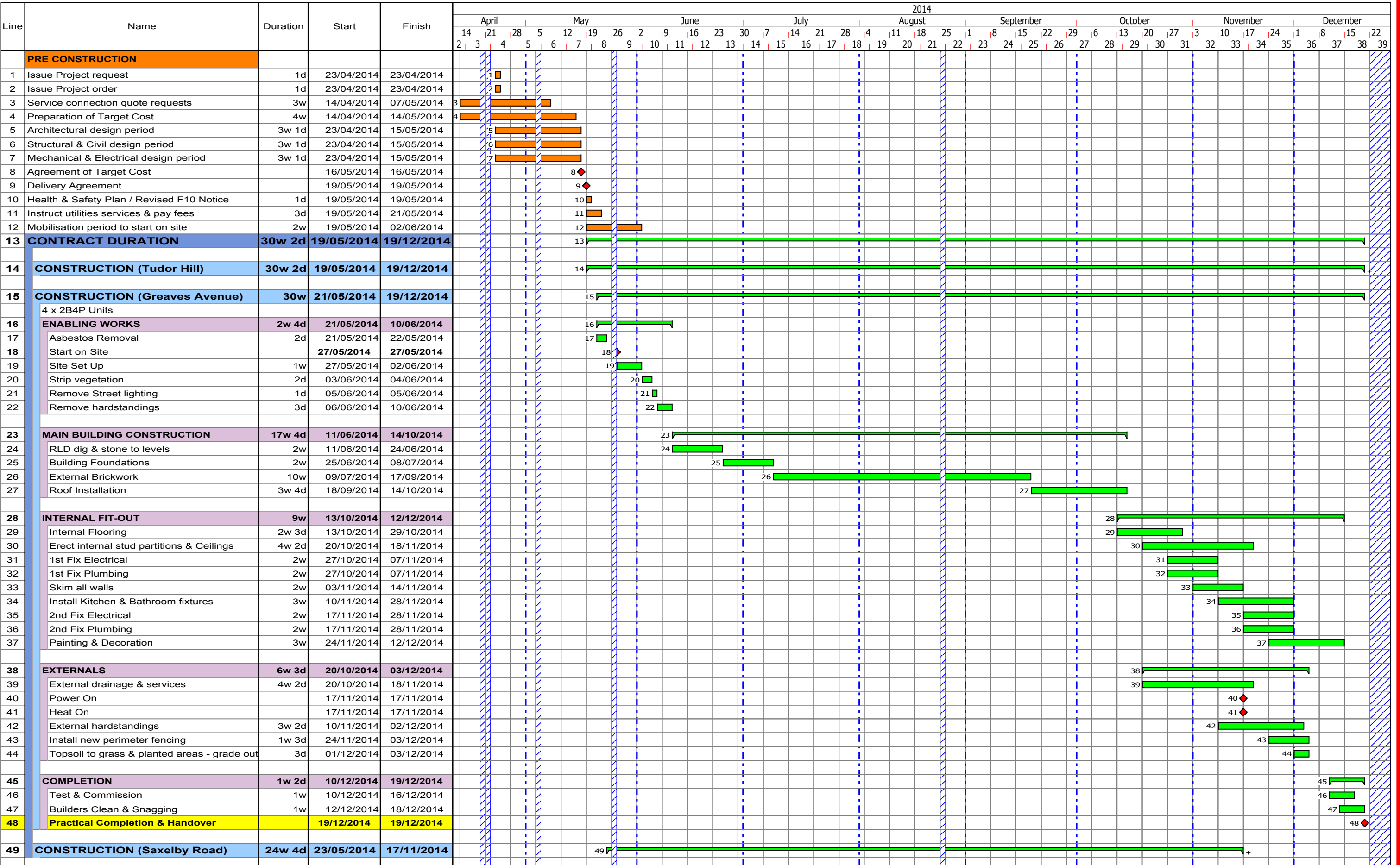




# Melton Mowbray - Housing Developments

Tudor Hill / Greaves Avenue / Saxelby Road



Project  
 Pre-Construction   
 Key Event / Milestone   
 Construction

Manager: Philip Wright  
 Drawn By: PRW

Revision Comment:  
 Construction Programme (Final)

Prog. No: 01 rev: E

**G F Tomlinson Building Ltd**  
 100 Alfreton Road, Derby, DE21 4AG  
 Tel: 01332 342202 / Fax: 01332 227589