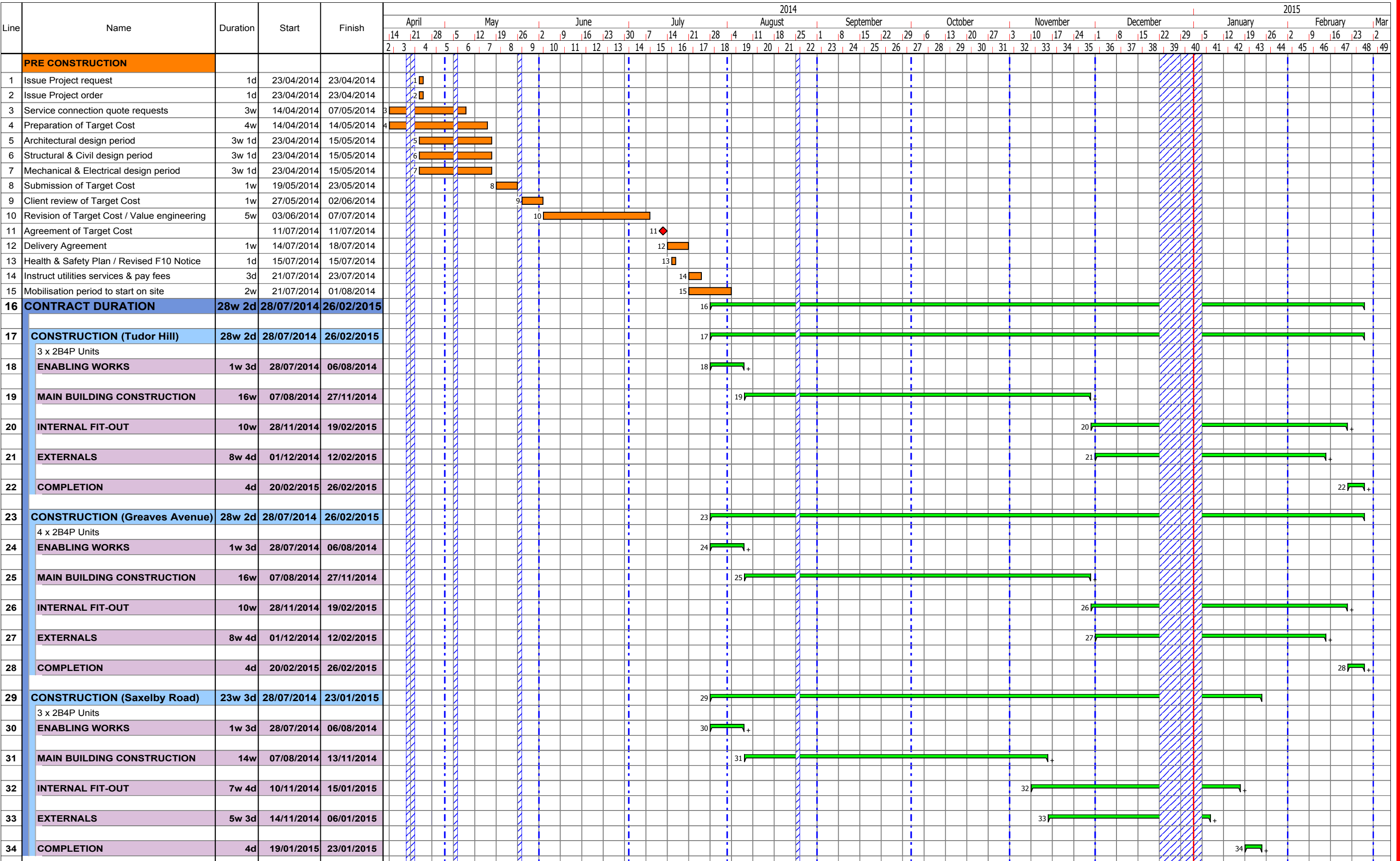




Melton Mowbray - Housing Developments

Tudor Hill / Greaves Avenue / Saxelby Road



Project
 Pre-Construction
 Key Event / Milestone
 Construction

Manager: Philip Wright
 Drawn By: PRW

Revision Comment:
 Construction Programme (Final) - Rev F

Prog. No: 01 rev: F

G F Tomlinson Building Ltd
 100 Alfreton Road, Derby, DE21 4AG
 Tel: 01332 342202 / Fax: 01332 227589